

WSG

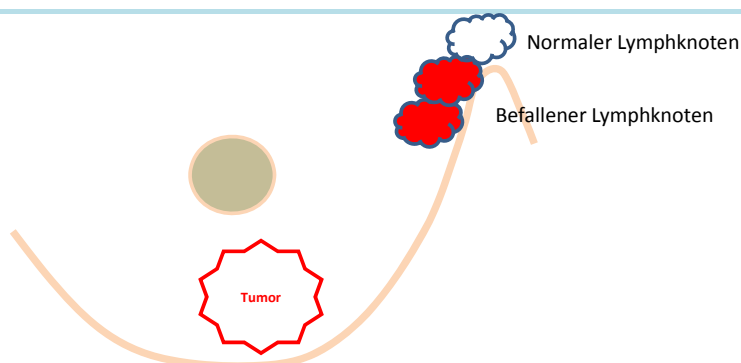
WOMEN'S  
HEALTHCARE  
STUDY GROUP

# Informationen für Laien ADAPT Studie HR+/HER2-

WSG

WOMEN'S  
HEALTHCARE  
STUDY GROUP

## Therapie bei Brustkrebs



### Wichtige individuelle Tumormerkmale :

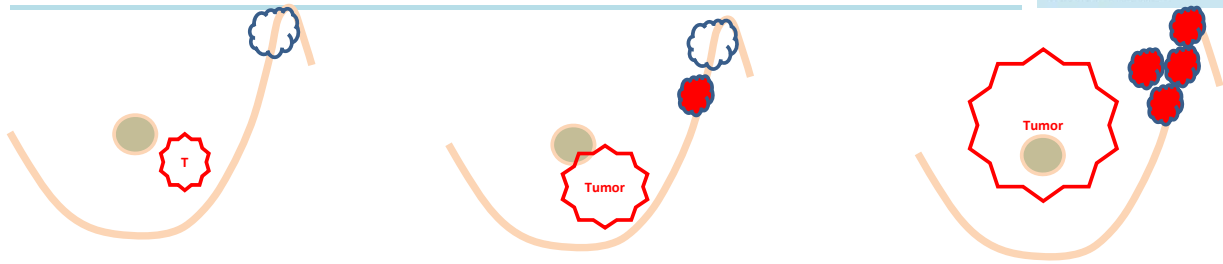
- Standard:**
- Wie groß ist der Tumor?
  - Sind Lymphknoten befallen?
  - Wie aggressiv sieht der Tumor aus (Grading, Typ)?
  - Wie ist die Zellteilungsrate (Ki-67)?
  - Ist der Tumor hormonempfindlich?
  - Gibt es Andockstellen für „Wachstumsfaktoren“ (HER2)?
  - Wie alt ist die Patientin?

Nur zur internen Verwendung!

# Tumorgröße und Lymphknotenbefall

WSG

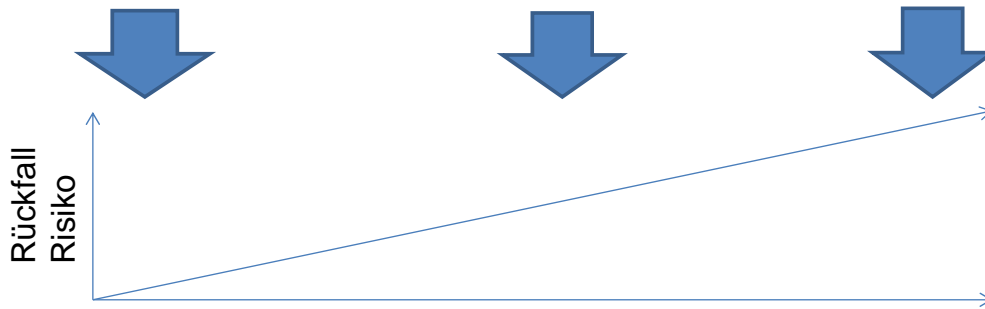
WOMEN'S  
HEALTHCARE  
STUDY GROUP



Niedriges Risiko

Mittleres Risiko

Hohes Risiko

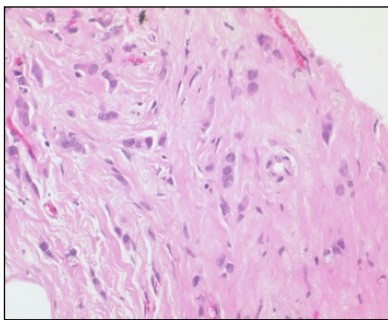


Nur zur internen Verwendung!

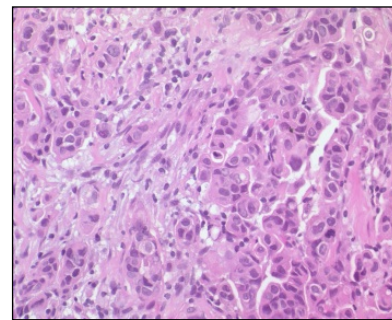
# Aggressivität - Grading

WSG

WOMEN'S  
HEALTHCARE  
STUDY GROUP



Lobulärer Tumor G1



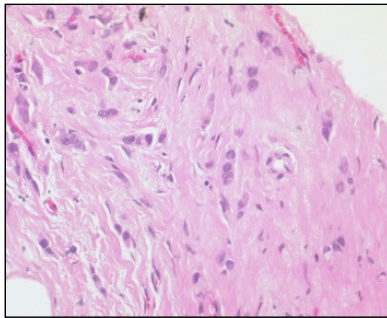
Duktaler Tumor G3

Nur zur internen Verwendung!

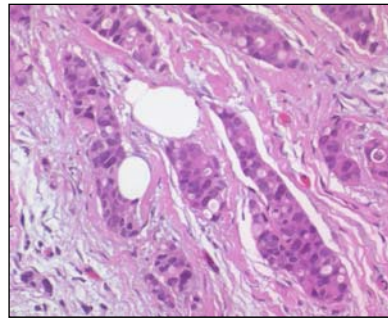
# Aggressivität - Grading

WSG

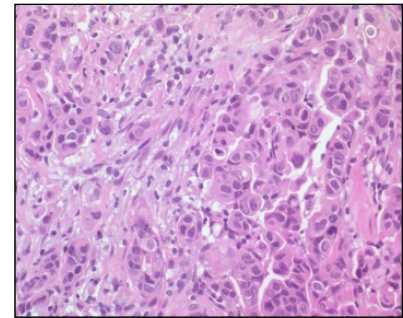
WOMEN'S  
HEALTHCARE  
STUDY GROUP



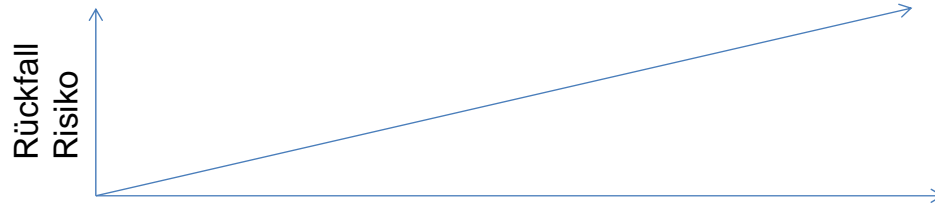
Tumor G1



Tumor G2



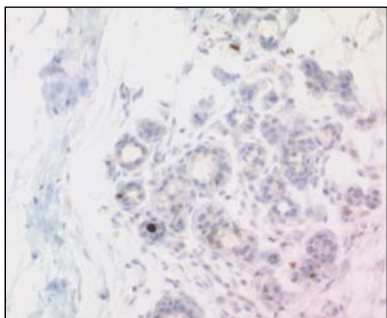
Tumor G3



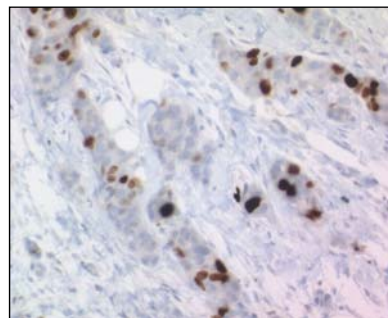
# Zellteilung (Ki-67)

WSG

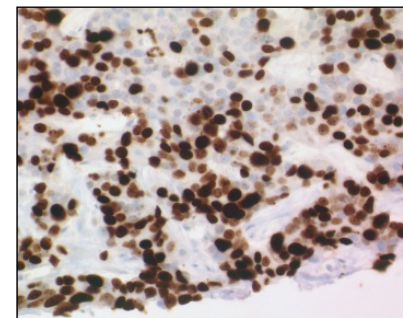
WOMEN'S  
HEALTHCARE  
STUDY GROUP



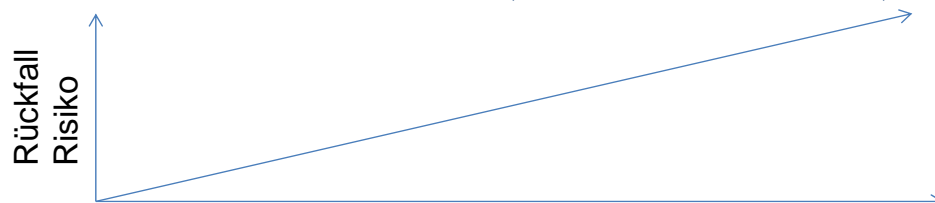
3%



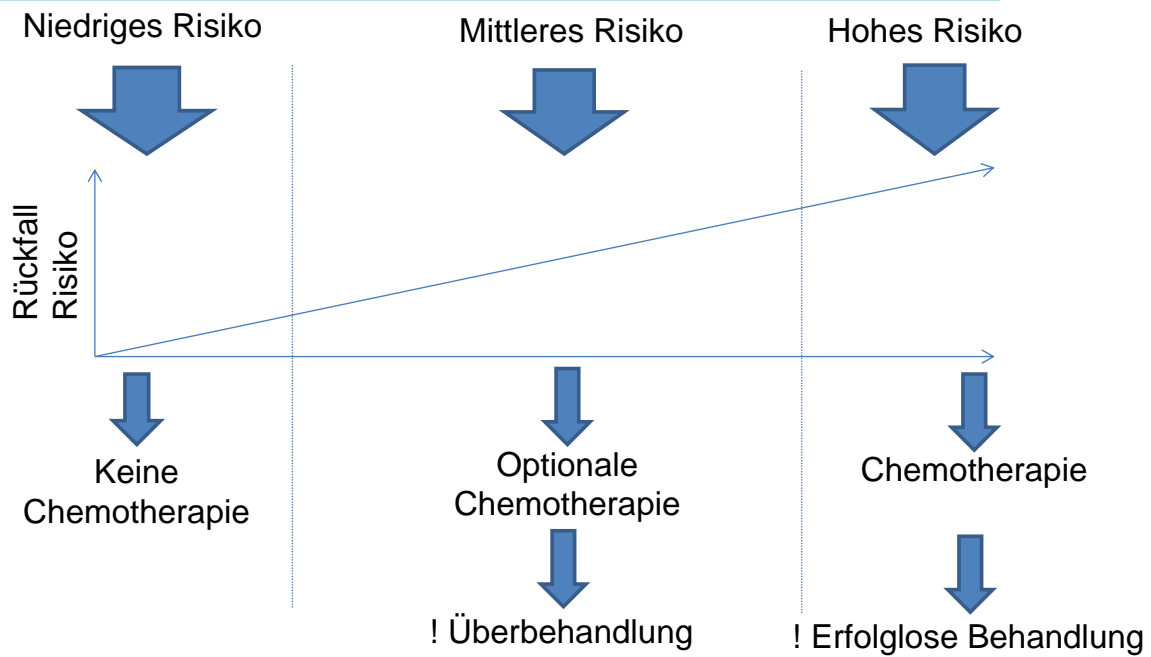
15%



50%

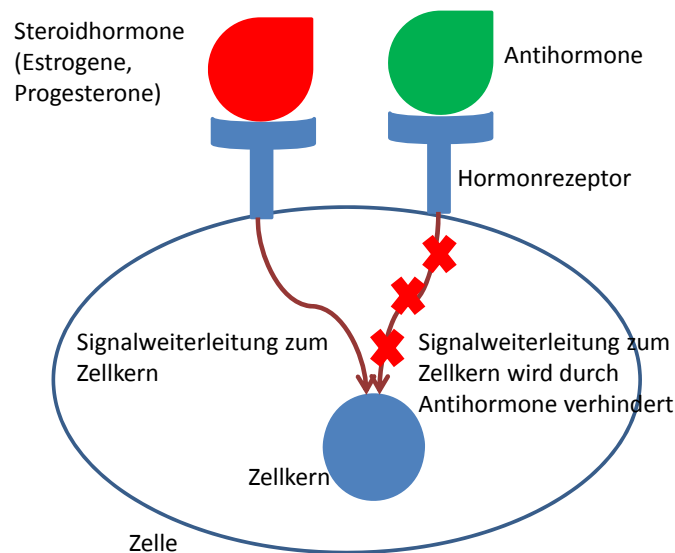


# Prognose und prophylaktische (adjuvante) Chemotherapie



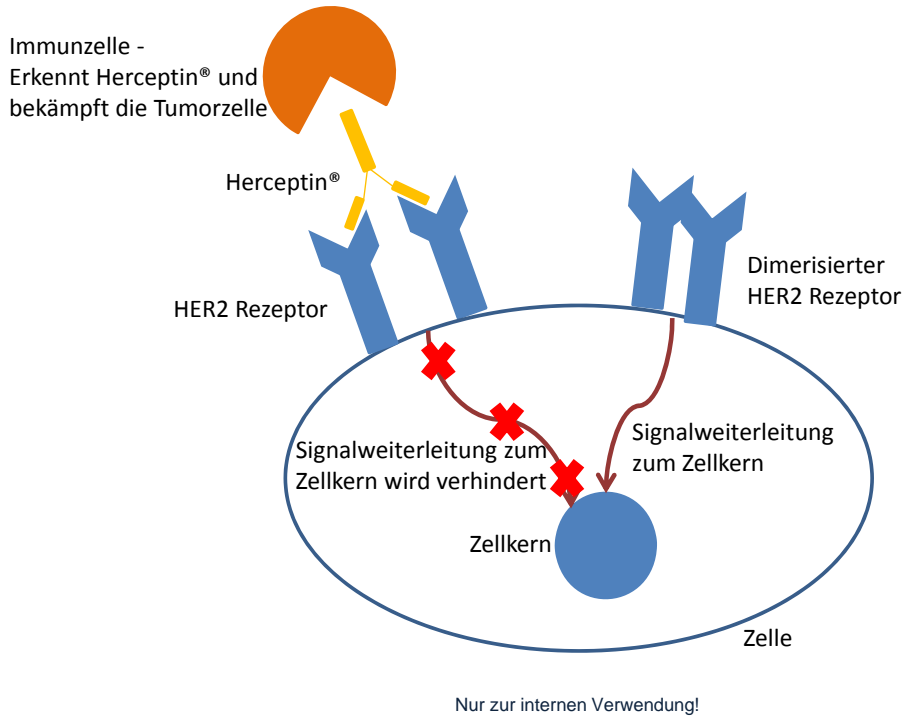
Nur zur internen Verwendung!

# Hormonrezeptoren



Nur zur internen Verwendung!

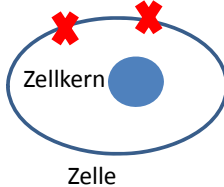
# HER2-Rezeptoren



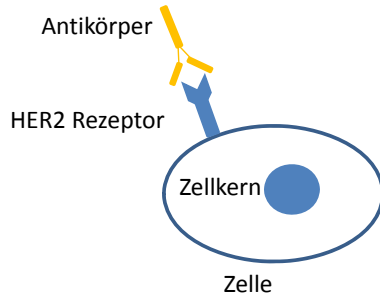
# Brustkrebs ist sehr unterschiedlich

## Hormonrezeptor -/ HER2-

Keine relevanten Rezeptoren vorhanden



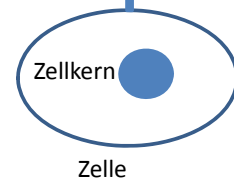
## Hormonrezeptor-/ HER2+



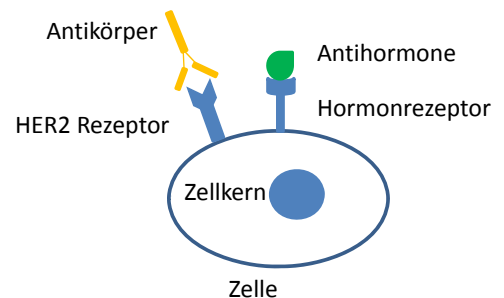
## Hormonrezeptor positiv/ HER2-

Antihormone

Hormonrezeptor



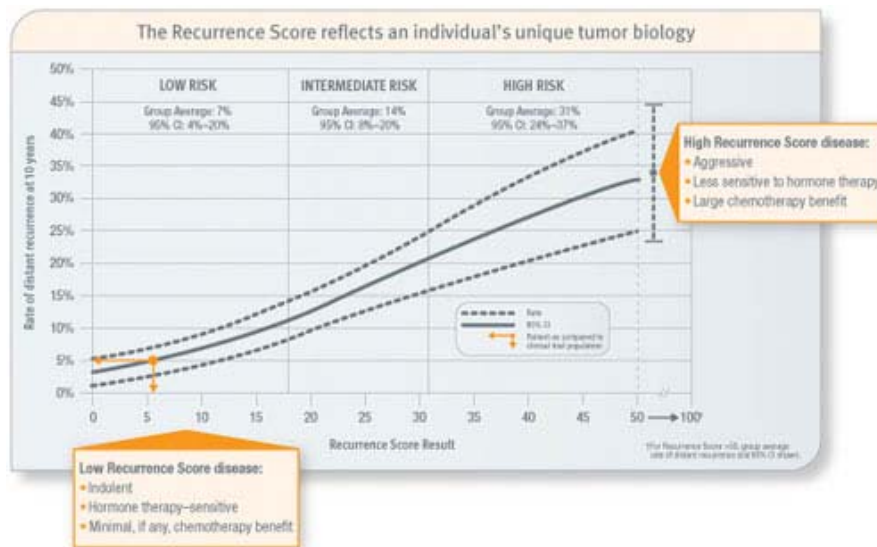
## Hormonrezeptor + / HER2+



Nur zur internen Verwendung!

# Genetischer Fingerabdruck

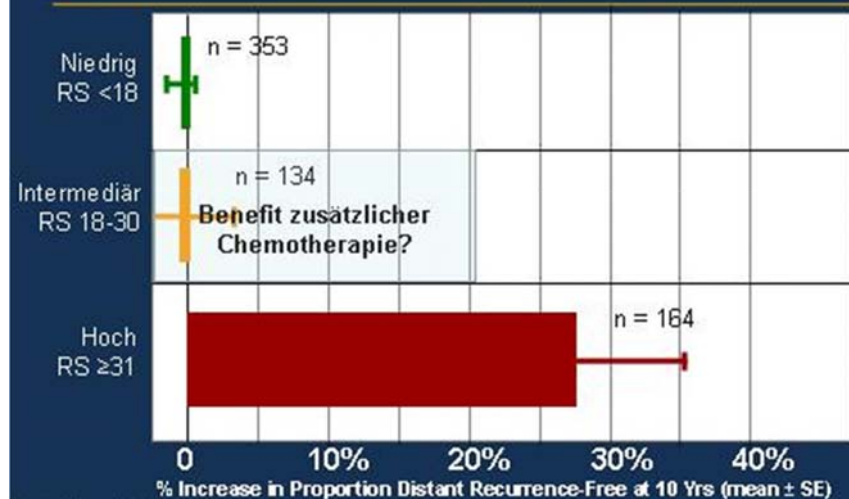
21 Gen Signature-Hormonrezeptor positiv / HER2 negativ



Nur zur internen Verwendung!

## Wert der Chemotherapie bei hormonsensiblen Tumoren in Abhängigkeit vom Recurrence Score

### Absoluter Chemotherapienutzen nach Recurrence Score Risikogruppe (NSABP B-20)

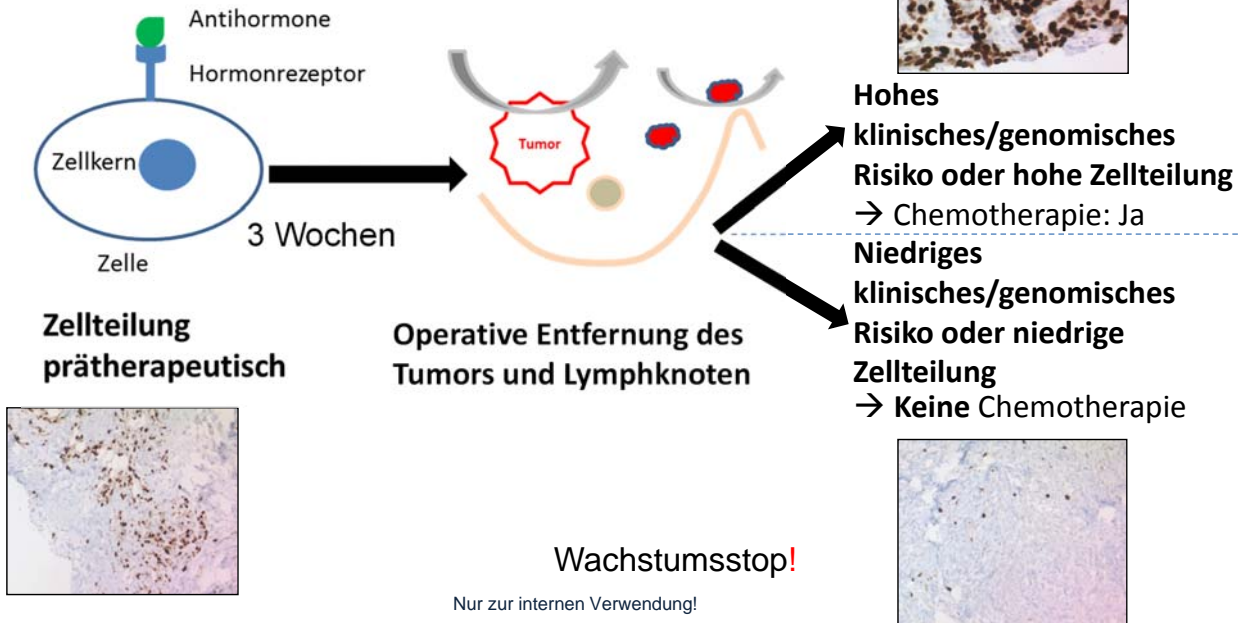


Palk et al. J Clin Oncol. 2006.

Nur zur internen Verwendung!

# Studienablauf ADAPT HR+/HER2-

➔ Analyse des genetischen Fingerabdrucks



# Hormonsensibles Mamma- karzinom

➔ Analyse des genetischen Fingerabdrucks

